

# OUR CLIENTS AND PARTNERS




## Green Point Vendor Numbers:

- John Hopkins Aramco: No. 100001435
- Riyadh metro: No. 000078
- Saudi Electrical Company; No. 005019652
- STC Solutions: No. 6809187
- Saudi Commission for health specialists: No. 103545



Green point

Constructions | Electromechanical | Low Current | Maintenance

# Running Projects



Green point

Constructions | Electromechanical | Low Current | Maintenance



# Running Projects

## Hilton Garden Inn – Khobar

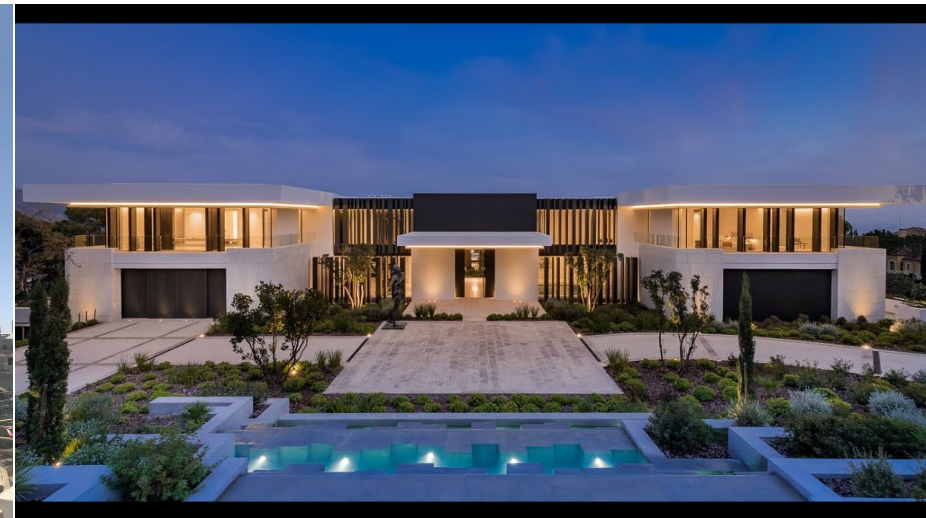


Green point

Constructions | Electromechanical | Low Current | Maintenance

# Running Projects

## Al Angary Private Complex



Green point

Constructions | Electromechanical | Low Current | Maintenance



# Running Projects

## Sulb Al Jazeera Factory



Green point

Constructions | Electromechanical | Low Current | Maintenance

# Previous Projects



Green point

Constructions | Electromechanical | Low Current | Maintenance



# Previous Projects

**PROJECT:**

HAYAT HOUSE HOTEL

**LOCATION:**

JEDDAH

**CONSULTANT:**

SAUOD CONSULT



**PROJECT:**

FREASER SUITS HOTEL

**LOCATION:**

TABUK

**CONSULTANT:**

RAFIEK A KREDIE



**PROJECT:**

QUALITY IN HOTEL

**LOCATION:**

JEDDAH

**CONSULTANT:**

AL MUHANNA CONSULTANTS



Green point

Constructions | Electromechanical | Low Current | Maintenance

# Previous Projects

**PROJECT:**  
PROCARE HOSPITAL  
**LOCATION:**  
DHAHRAN  
**CONSULTANT:**  
PROJACS INTERNATIONAL



**PROJECT:**  
KING ABDELAZIZ HOSPITAL  
**LOCATION:**  
AL ZAHIR - MAKKAH  
**CONSULTANT:**  
A.F.M. CONSULTANT



**PROJECT:**  
KING FAISAL HOSPITAL  
**LOCATION:**  
AL SHISHA - MAKKAH  
**CONSULTANT:**  
A.F.M. CONSULTANTS



Green point

Constructions | Electromechanical | Low Current | Maintenance



# Previous Projects

**PROJECT:**

WEST AVENUE MALL

**LOCATION:**

FISALIAH - DAMMAM

**CONSULTANT:**

MDEC ENGINEERING



**PROJECT:**

DSCA

**LOCATION:**

AL ALQIQ - RIYADH

**CONSULTANT:**

ARAB CONSULTANT



**PROJECT:**

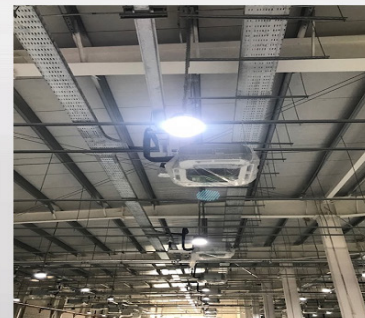
WAZAYA WAREHOUSES

**LOCATION:**

AL HASA

**CONSULTANT:**

AFM CONSULTANT



# Previous Projects

**PROJECT:**

AL NASEEM SCHOOL

**LOCATION:**

NASEEM - RYADH

**CONSULTANT:**

AECOM ARABIA



**PROJECT:**

DOWN SYNDROME CENTER

**LOCATION:**

SAHAFA - RIYADH

**CONSULTANT:**

ARAB ENGINEERS CONSULTANT



**PROJECT:**

AL REMAL SCHOOL

**LOCATION:**

REMAL - RIYADH

**CONSULTANT:**

AECOM





# Previous Projects

**PROJECT:**

TAMIMI MALL

**LOCATION:**

DAMMAM

**CONSULTANT:**

SEASONS ENGINEERING



**PROJECT:**

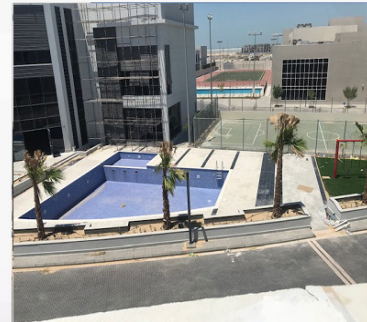
SOUTHERN PEARL

**LOCATION:**

KHOBAR

**CONSULTANT:**

BENA ENGINEERING



**PROJECT:**

SCHOOL 177

**LOCATION:**

RIYADH - BADIEA

**CONSULTANT:**

AECOM



Green point

Constructions | Electromechanical | Low Current | Maintenance

# Previous Projects

**PROJECT:**

AL ANGARY COMPLEX

**LOCATION:**

Riyadh

**CONSULTANT:**

DELTA CONSULT



**PROJECT:**

DANA WATER BAY

**LOCATION:**

HALF MOON BEACH

**CONSULTANT:**

PROJACS INTERNATIONAL



**PROJECT:**

TARSHEED BLDG

**LOCATION:**

RIYADH

**CONSULTANT:**

AL HAIKAL CONSULTATS



Green point

Constructions | Electromechanical | Low Current | Maintenance